



- Excellent protection against both liquid and solid pollution
- Facilitates having gas springs working in any position
- Cost savings





i

MICRO

TITAN

TPH

TPS

TPSP

TPF

TPK

TPC

TPCT

TPB

TPR

TPA

TPG

TPSR

TPSRs

TPNS

STOP
CYLINDER

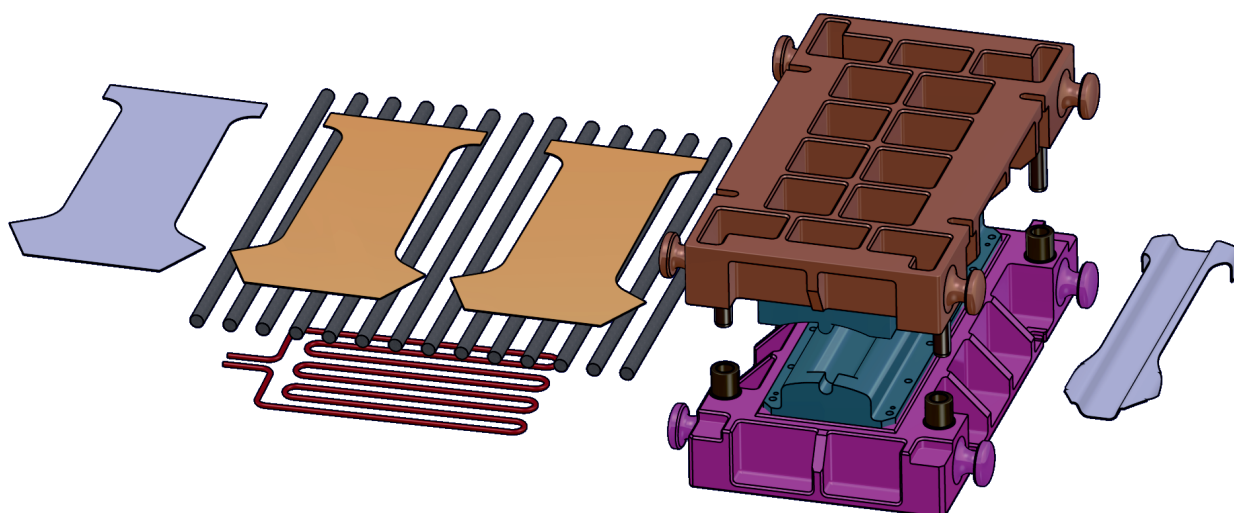
HOT
FORMING

TPHT

TPSL



Due to the increasingly frequent use of high-elastic-limit steels in hot forming processes in the automobile industry, and to the consequent increase in demand for gas springs working under adverse environmental conditions, the **TECAPRES** research team has studied, designed and subsequently developed a range of specific products for both liquid and solid extreme pollution mechanic environmental conditions.



- ✓ Sealed rod protection cup
- ✓ Surfaces protected against corrosion in metal components
- ✓ Designed to work in any position
- ✓ Safety features

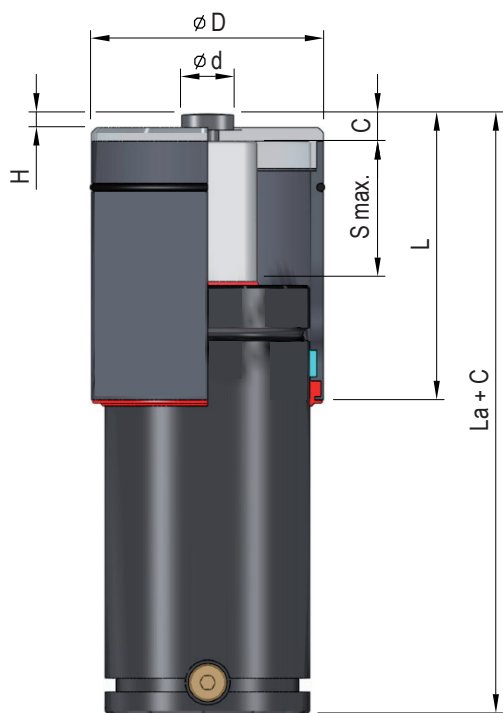
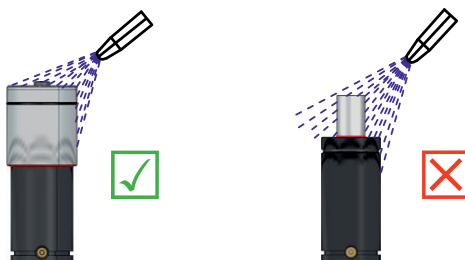




TECAPRES offers the possibility of incorporating this device onto TPS and MICRO series gas springs in order to protect rods.

This is particularly recommendable in those cases in which where there are extreme pollution conditions, in order to ensure proper functioning of gas springs, thus guaranteeing a longer service life.

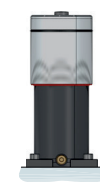
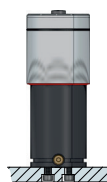
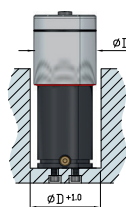
- ✓ Excellent protection against both liquid and solid pollution
- ✓ It facilitates having the gas spring working in any position
- ✓ Cost savings.
- ✓ Surface protection against corrosion in metal components.



Gas spring	Smax mm	ØD mm	Ød mm	L mm	C mm	H mm
TPS 750	100% Smax	60	22.5	44 + S	10	5
MICRO 50VS	Smax (-4)	60	22.5	36 + S	10	5
MICRO 63V	Smax (-4)	74	22.5	43 + S	10	5
TPS 1500	100% Smax	86	22.5	53 + S	11	5
MICRO 75	100% Smax	86	22.5	42 + S	11	5
TPS 3000	100% Smax	106	22.5	58 + S	12	5
MICRO 95	Smax (-4)	106	22.5	56 + S	12	5
TPS 5000	100% Smax	136	22.5	65 + S	15	5
MICRO 120V	Smax (-4)	136	22.5	61.5 + S	15	5

Please check the Smax specification for each model in the catalogue
(Other models under order)

Assembly possibilities



FP FLANGE

FB FLANGE

How to order

TPS 1500 x 100 **RP**

Model

Stroke

With rod-protection





i

MICRO

TITAN

TPH

TPS

TPSP

TPF

TPK

TPC

TPCT

TPB

TPR

TPA

TPG

TPSR

TPSRs

TPNS

STOP
CYLINDER

HOT
FORMING

TPHT

TPSL

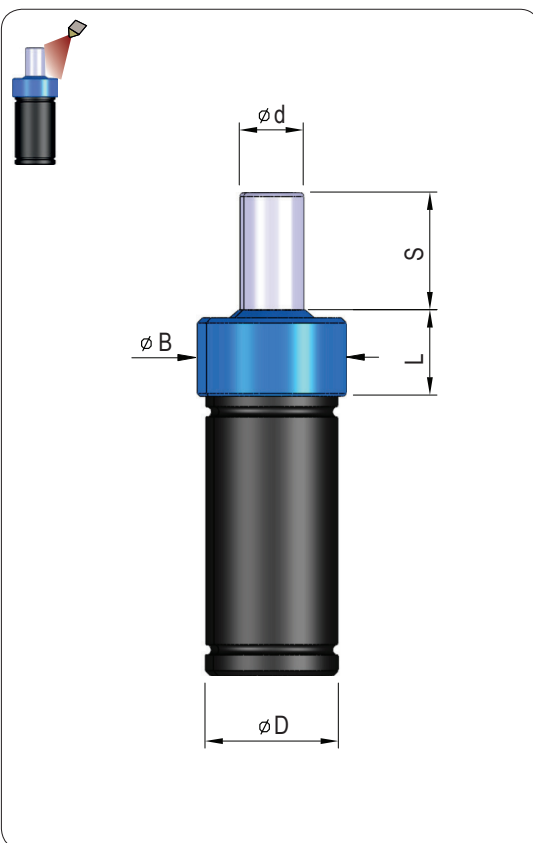


The function of the shield-scraper is to avoid penetration of particles and substances inside the cylinder, like liquids, metal specks, impurities, etc, thus significantly lengthening gas spring useful life when it is working in highly-polluted conditions.

This cleaning function is attained thanks to an over-dimensioning of diameters, which ensures a tight fit of the scraper onto the cylinder wall.

This polyurethane shield-scraper provides a technically clean tight fit on the stem. Besides, the cleaning lip allows for excess lubricant to seep out from the inside of the gas spring.

- ✓ Excellent protection against both liquid and solid pollution
- ✓ Simple assembly in the gas spring
- ✓ It facilitates having the gas spring working in any position
- ✓ Cost savings.



Code	Gas spring code	Ød mm	ØD mm	S mm	L mm	ØB mm
RE-6-12	TPC 12	6	12	Smax (-3)	13	14,8
RE-6-14	TPC 14	6	14	Smax (-3)	13	16,8
RE-8-15	MICRO 15	8	15	Smax (-3)	13	17,8
RE-8-19	TPC 19	8	19	Smax (-3)	13	21,9
RE-11-19	MICRO 19V.1	11	19	Smax (-3)	13	21,9
RE-12-25	TPF 420	12	25	Smax (-2,5)	16,5	28,8
	TPC 25			Smax (-2,5)	16,5	28,8
	TPCT 25			Smax (-2,5)	16,5	28,8
	TPA 25			Smax (-2,5)	16,5	28,8
	TPG 25			Smax (-4,5)	16,5	28,8
RE-14-25	MICRO 25	14	25	Smax (-2,5)	16,5	29,0
	MICRO 25H			Smax (-2,5)	16,5	29,0
	MICRO 25R			Smax (-2,5)	16,5	29,0
RE-16-32	MICRO 32VS	16	32	Smax (-4,0)	16,0	36,4
	MICRO 32V			Smax (-4,0)	16,0	36,4
	MICRO 32C			Smax (-4,0)	16,0	36,4
	TPSP 300.1			Smax (-4,0)	16,0	36,4
	TPKR 32			Smax (-3,0)	16,0	36,4
	TPKN 32			Smax (-3,0)	16,0	36,4
	TPCT 300			Smax (-3,0)	16,0	36,4
	TPG 32			Smax (-4,0)	16,0	36,4
	MICRO 32			Smax (-4,0)	18,0	36,4
	MICRO 32R			Smax (-4,0)	18,0	36,4
RE-18-32	MICRO 32H	18	32	Smax (-4,0)	18,0	36,4
	TITAN 32			Smax (-4,0)	18,0	36,4
	TPF 750			Smax (-3,0)	18,0	36,4
	TPK 32			Smax (-3,0)	18,0	36,4
	TPC 350			Smax (-3,0)	18,0	36,4
	TPGP 32			Smax (-4,0)	18,0	36,4

How to order

TPC 25 x 50 RE BL
Model Stroke With Shield-scraper Color code
GAS SPRING WITH SHIELD SCRAPER

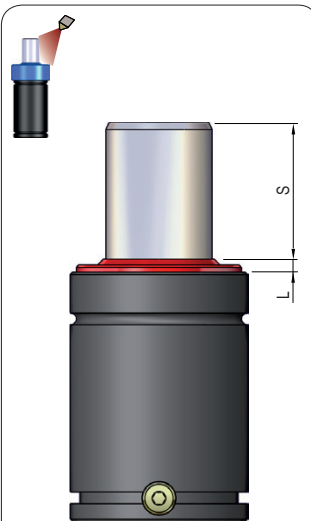
RE-12-25

Code

ONLY SHIELD SCRAPER

Please check the Smax specification for each model in the catalogue
(Other models under order)

TPGAS 07 01-2018



How to order

MICRO 63V x 75 RE

Model Stroke With Shield-scraper

GAS SPRING WITH SHIELD-SCRAPER

RE-36-50

Code

ONLY SHIELD-SCRAPER

MICRO 75 x 50 CR RE

Model Stroke With chromed stem With Shield-scraper

GAS SPRING WITH SHIELD-SCRAPER AND CHROMED STEM TO PROTECT AGAINST CORROSION

Please check the Smax specification for each model in the catalogue (Other models under order)

- ✓ Excellent protection against both liquid and solid pollution
- ✓ Simple assembly in the gas spring
- ✓ It makes it possible to have gas springs working in any position
- ✓ Cost savings.
- ✓ Usable with all kinds of larges.
- ✓ (CR) optional chromed stem.



Code	Gas spring code	L mm	S mm
RE-20-32	MICRO 38V	4,5	Smax (-4,5)
	MICRO 38VS		
	MICRO 38C		
	TPS 500.1		
	TPSP 500.1		
RE-20-35	TPR 38.1	4,5	Smax (-4,5)
	TPS 500.2		
	TPKF 500		
RE-22-32	MICRO 38	4,5	Smax (-4,5)
	MICRO 38R		
	MICRO 38H		
	TITAN 38		
	TPK 600		
	TPC 500		
	TPCR 500		
	TPCT 500		
	TPG 500		
RE-25-35	MICRO 45	5,0	Smax (-5,0)
	MICRO 45V		
	MICRO 45C		
	MICRO 45CF		
	TPSP 750		
	TPK 750		
	TPKS 750		
RE-25-40	TPR 45	5,0	Smax (-5,0)
	TPS 750		
	TPKF 750		
RE-28-40	MICRO 50VS	5,0	Smax (-5,0)
	MICRO 50.1		
	MICRO 50CS		
	MICRO 50CF		
	TPS 1000x13.1		
RE-30-40	TPS1000x125.1	5,0	Smax (-5,0)
	TPK 1000		
	TPKS 1000		
	TPC 1000		
	TPSP 1000x160.1		
	TPSP 1000x300.1		
	TPR 50		
RE-32-43	MICRO 50V	5,5	Smax (-5,5)
	MICRO 50C.1		
	TITAN 50		

Code	Gas spring code	L mm	S mm
RE-36-50	MICRO 63V	6,0	Smax (-6,0)
	MICRO 63CF		
	MICRO 63CS		
	TPK 1500.1		
	TPKN 1500		
	TPC 1500		
	TPSP 1500		
	TPMCA 1500		
	TPMCSB 1500.1		
	TPS1500.1		
RE-36-63	TPS1500.1	6,0	Smax (-6,0)
RE-40-55	MICRO 63	5,5	Smax (-5,5)
RE-42-55	TITAN 63	5,5	Smax (-5,5)
RE-45-63	TPSP2400	6,0	Smax (-6,0)
RE-45-65	MICRO 75	7,5	Smax (-7,5)
	MICRO 75CF		
	MICRO 75CS		
	TPK 2500		
	TPC 2500		
	TPMCS 1500		
	TPMCSB 1500		
	TPMCS 2400		
	TPMCSB 2400		
	TPK 3000		
RE-50-65	TITAN 75	7,5	Smax (-7,5)
	TPC 3000		
	TPCT 2500		
	TPCT 3000		
	TPMCA 3000		
	TPMCB 3000.1		
	TPS 3000		
RE-50-80	TPKF 3000	7,5	Smax (-7,5)
	MICRO 95		
RE-60-80	TPK 4250	7,5	Smax (-7,5)
	TPC 4000		
	TPCT 5000		
	TPSP 4200		
	TPMCS 3000		
	TPMCSB 3000		
	TPMCA 4500		
RE-65-100	TPMCB 4500.1	6,0	Smax (-6,0)
	TPS 5000		
RE-75-100	MICRO 120V	6,0	Smax (-6,0)
	MICRO 120.1		
	TPC 6500		
	TPSP 6600		
	TPMCA 6500		
	TPMCB 6500.1		
RE-80-125	TPS 7500	7,5	Smax (-7,5)
RE-90-125	MICRO 150	7,5	Smax (-7,5)
	TPC 10000		

TPGAS 07 01-2018





MICRO

TITAN

TPH

TPS

TPSP

TPF

TPK

TPC

TPCT

TPB

TPR

TPA

TPG

TPSR

TPSRS

TPNS

STOP
CYLINDER

HOT
FORMING

TPHT

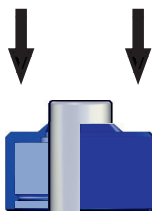
TPSL



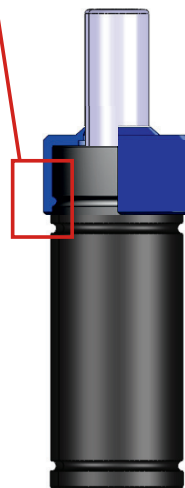
ASSEMBLY ILLUSTRATIONS · ILUSTRACIONES DEL MONTAJE



Select the correct gas spring and the SHIELD-SCRAPER model.



Introduce the SHIELD-SCRAPER into the stem.

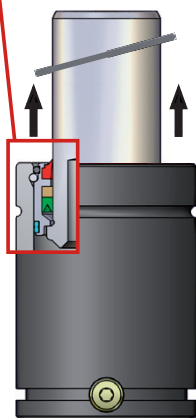
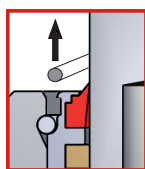


Press the SHIELD-SCRAPER into the correct position.

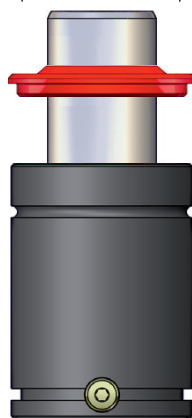
ASSEMBLY ILLUSTRATIONS · ILUSTRACIONES DEL MONTAJE



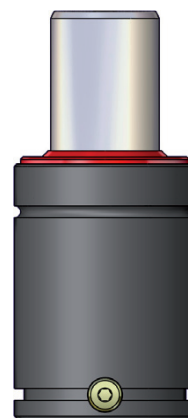
Select the correct gas spring and the SHIELD-SCRAPER model.



Remove the pollution project O-ring.



Introduce the SHIELD-SCRAPER into the stem.



Press the SHIELD-SCRAPER to the correct position.