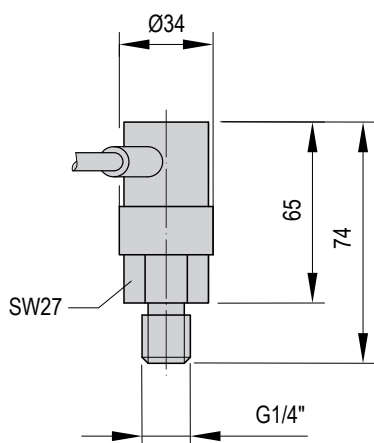
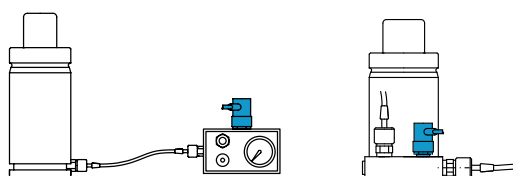
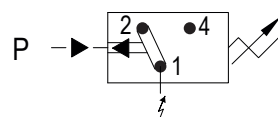




PRESSURE SWITCH PS-1



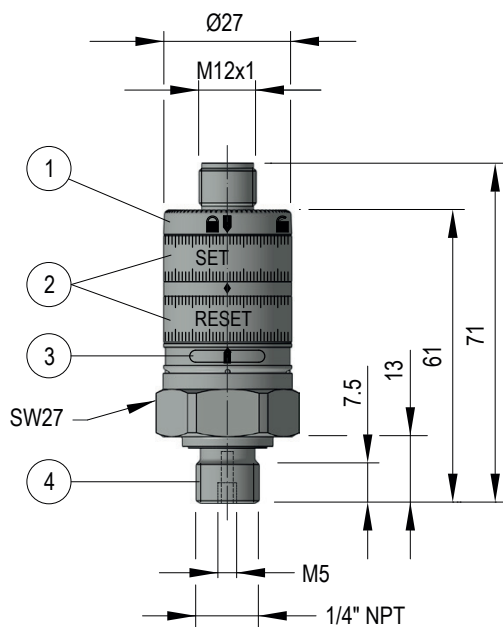
✓ LOWEST COST PRESSURE SWITCH



TECHNICAL INFORMATION

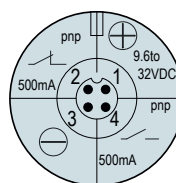
Work field	50 - 200 Bar
Working temperature	-30°C · +100°C
Operation voltage	4A / 250V
Operating frequency	< 200min ⁻¹
Mechanical life	10 ⁶ operating cycles
IP protection	IP 65

PRESSURE SWITCH PS-2



- ① Locking ring
- ② Setting ring (manually adjustable after unlocking)
- ③ Green LED: supply voltage OK
Yellow LED: Set1 value reached, output = ON
- ④ Tightening torque 25Nm

NOTE: protective cover and angled electrical connector (5m cable) included



✓ LOW COST PRESSURE SWITCH FOR PRESSURE CONTROL IN LINKED GAS SPRINGS SYSTEM

✓ EASY TO CONNECT TO THE CONTROL PANEL

TECHNICAL INFORMATION

Work field	0 - 400 Bar
Working temperature	-25°C · +80°C
Operation voltage	9.6 to 32 VDC, <25mA
Operating frequency	< 100Hz
Mechanical life	50 ⁶ operating cycles
IP protection	IP 67
Wiring terminations	4 pin M12 electrical connector





i

MICRO

TITAN

TPH

TPS

TPSP

TPF

TPK

TPC

TPCT

TPB

TPR

TPA

TPG

TPSR

TPSRS

TPNS

STOP
CYLINDER

HOT
FORMING

TPHT

TPSL



ELECTRONIC PRESSURE MONITOR

PS-4



PS-4 pressure monitors offer a high level of operating comfort.

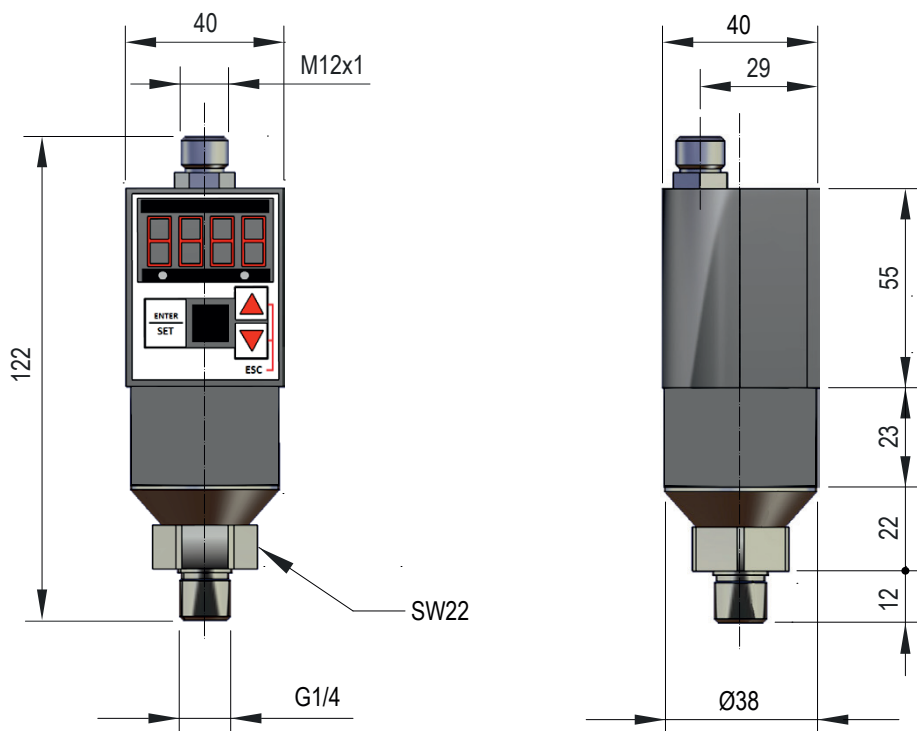
Their distinguishing characteristic is a different sensing element connection. It is equipped with a 1/4 inch connection with an outside thread and it can also use a UP to +600bar. The media touching parts are also made of stainless steel.

Among other things, the switching points, release positions, output logic and time delay can be programmed via the membrane keyboard.

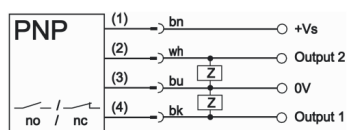
Following installation, the sensor body can be rotated by 350° and the sensor display can be rotated 180° by means of software.

All adjustment parameters can be set and changed via a PC or notebook via the optical interface of the pressure monitor.

Its software offers the opportunity to write measured values in an Excel table. Data logging can be triggered when necessary or set to determined readings.



4-pin



Output 2, selectable between switching, analog and alarm output

Socket M12 connector, 4-pin



Straight



Angle

TECHNICAL INFORMATION

Output signal	PNP/analog (current output) /alarm output
Switching outputs	OUT1 / OUT2
Pressure range	400 Bar
Operating voltage	12 - 32V DC, <60 mA
Voltage drop (max. load)	< 2.0V DC
Output current (max. load)	1A
Switching frequency	max. 125Hz
Repeat accuracy	≤ ± 0.1% of the final value
Operating temperature	-20°C - +80°C
IP protection	IP 65
Connection	M12-connector, 4-pin